

# Pius X High School

## Athletics Emergency Action Plan

1. Introduction
2. Emergency Personnel
3. Emergency Communication
4. Emergency Equipment
5. Roles of First Responder
6. Venue Directions

### Introduction

Emergency situations may arise at anytime during athletic events. Action must be taken in order to provide the best possible care to the individual student athlete in an emergency and/or life threatening condition. School personnel must be trained in how to respond to emergencies.

### Emergency Personnel

1. Doctor(s): Dr. Robert Dugas (Team Physician)
2. Athletic Trainer: Drew Erks
3. AD: Tim Aylward
4. Asst. AD: Jake Moore
5. Head Coach
6. Asst. Coaches

#### 4 basic roles of the emergency team:

1. Establish scene safety and immediate care of athlete
2. Activation of EMS
3. Equipment Retrieval
4. Direction of EMS to scene

### Emergency Equipment

1. Athletic Training Kit (CPR mask, gloves, etc.)
2. AED's (One in first bay at FB stadium, One in hallway across from main school office)
3. Vacuum splints (orange bag located in football stadium office)
4. Crutches (in AT room closet, also in football stadium office)

## **Role of First Responder**

1. Establish that the scene is safe and provide immediate care to injured party
2. Activate EMS in the following situations or if unsure of medical care needed:
  - a. Unconscious victim
  - b. No pulse and/or circulation
  - c. Anaphylactic shock, i.e., allergic reaction to food, drugs, or insect bites
  - d. Electrical shock
  - e. Head injury w/ loss of consciousness
  - f. Neck injury resulting in loss of sensation, strength or range of motion. DO NOT MOVE victim.
  - g. Suspected fracture. DO NOT MOVE victim.
3. Call 911
  - a. Site: Pius X High School
  - b. Address: 6000 A Street, Lincoln, NE
    - i. Injury Location i.e. Football Field, Gym, etc.
  - c. Caller Phone number
  - d. Number of victims involved
  - e. Condition of injured
  - f. Treatments rendered
4. Provide appropriate CPR or first aid
5. Notify Parents/Guardians
6. Notify AT (if not present)
  - a. Drew Erks, 402-649-519
7. Notify AD
  - a. Tim Aylward
8. DO NOT GIVE INFORMATION TO ANYONE BUT THE PARENTS/GUARDIANS, ATHLETIC TRAINER, ATHLETIC DIRECTOR, or EMS.

## **Role of Secondary Responder**

1. Retrieval of Emergency Equipment
2. Open gates or doors
3. Designate individual to flag EMS
4. Scene control, limit to first aid providers and EMS.

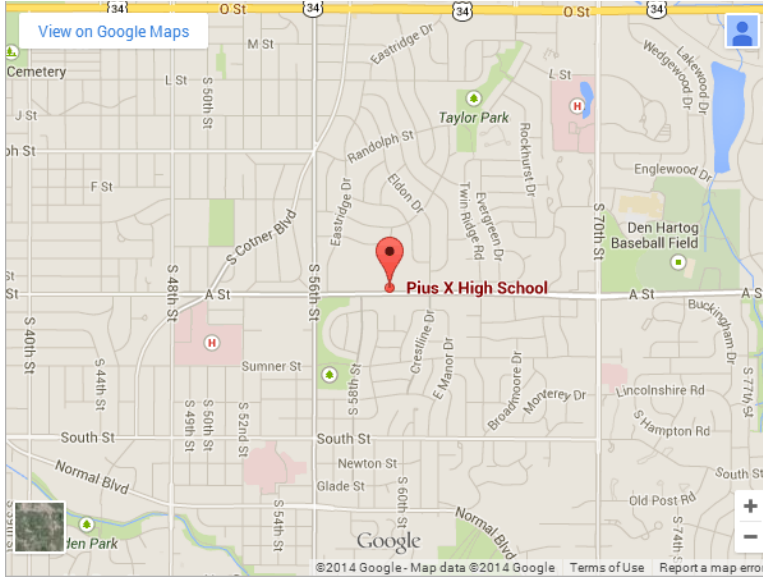
Role of Coach, AT, AD, in case of EMS transport

1. Accompany athlete if parents are not directly available
2. Accompanying coach to update AT/AD on status
3. AT to AD Communication on status

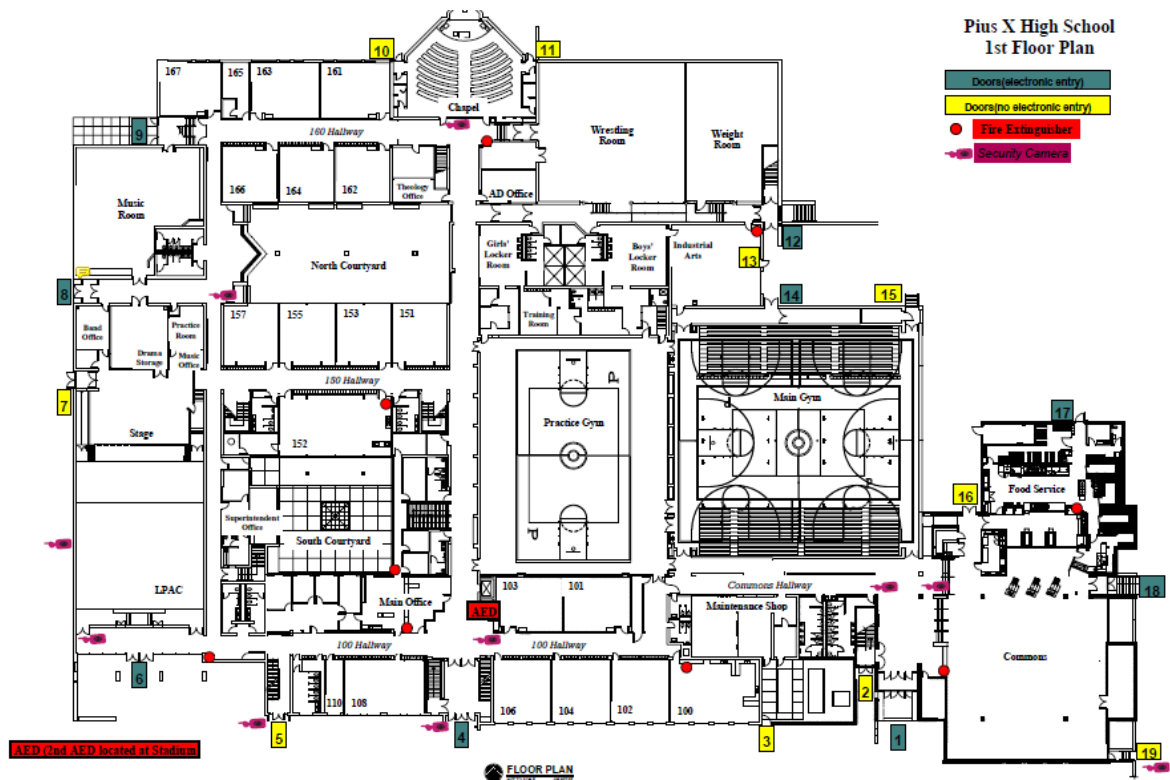
# VENUE DIRECTIONS

## Pius X High School Venues

### Pius X High School: 6000 A Street



## Pius X Floor Plan

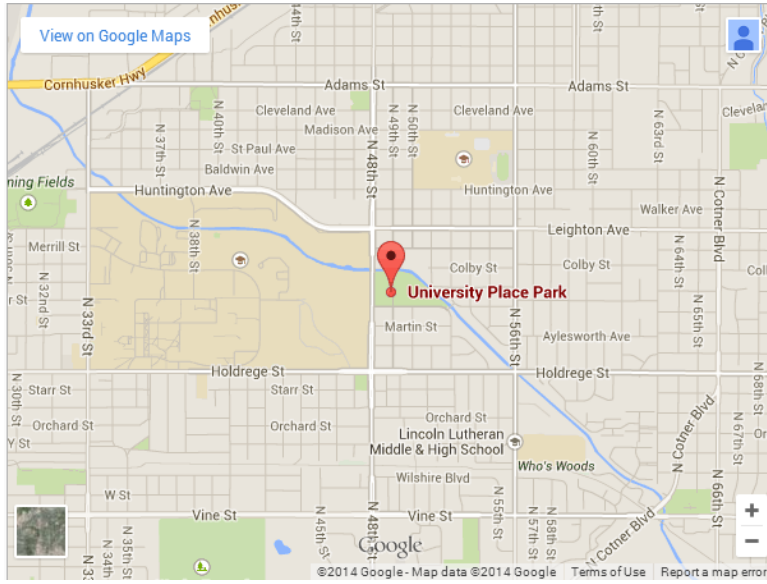




- For Gym Emergencies (4 on map above), enter Door 1, on South side of School along A Street. (Labeled A on map above)  
Have EMS pull in front of the school, south side in pick up lane. EMS will be met and accompanied to victim by school staff member.
- For Wrestling/Weight Room Emergencies, enter Door 12, on Northeast corner of the School (B on map above).  
Have EMS use driveway on east side of the school, and follow it around to near the tennis courts. EMS will be met and accompanied to victim by school staff member.
- For practice field injuries, (2 on map above) have EMS park on west side of the school along north fence line (C on map above) EMS will be met and accompanied to victim by school staff member.
- For injuries at the stadium, (1 on map above) Gate to the south of the concession stand will be opened (D on map above). EMS will be met and accompanied to victim by school staff member.

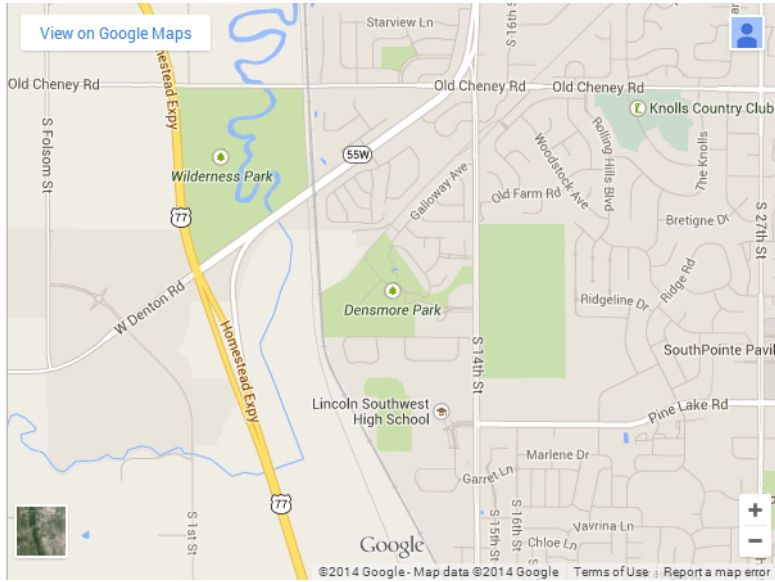
Softball:

### University Park Place: North 48<sup>th</sup> Street



Baseball:

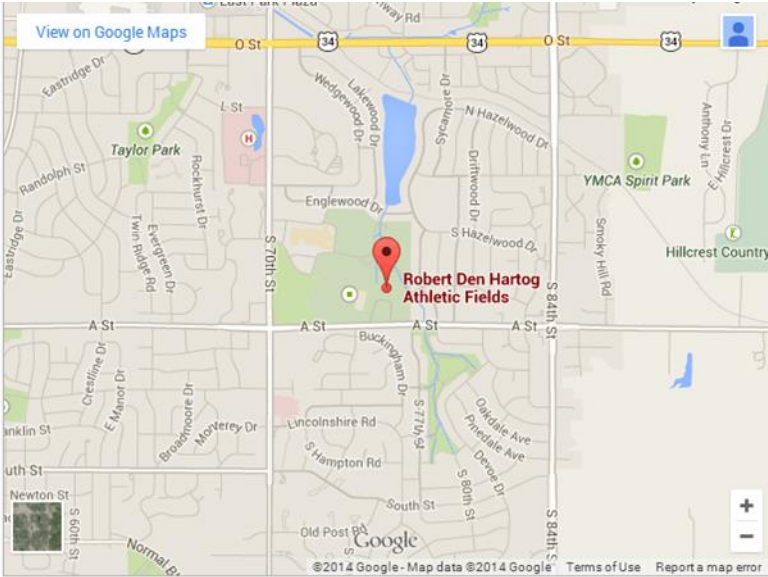
**Densmore Park: S. 14<sup>th</sup> street**



**Sherman Field: 3<sup>rd</sup> and South Street**



Den Hartog Field: 76<sup>th</sup> and A Street, east of Seacrest Field



### IMPORTANT CONTACTS LIST

<b>OFF CAMPUS CONTACTS</b>	<b>Phone Number</b>
Police Department	911 or (402) 441-6000
Fire and EMS	911 or (402) 441-7363
St. Elizabeth Regional Medical Center	402-219-8000 (Switchboard)
Poison Control	1-800-222-1222

<b>ON CAMPUS CONTACTS</b>	<b>Name</b>	<b>Email Address</b>	<b>Phone Number</b>
Team Physician	Dr. Robert Dugas		402-488-3322 (O)
Athletic Trainer	Drew Erks	derks@nebraskaortho.com	402-649-5179 (C)
Athletic Director	Tim Aylward	Tim.Aylward@piusx.net	402-730-0224 (C)
Assistant Athletic Director	Jake Moore	Jake.Moore@piusx.net	402-416-9642 (C)
Principal	Tom Korta	Tom.Korta@piusx.net	
School Office			402-488-0931 (O)